

Test & Automation

Customized test and inspection systems



Test us!

Deutronic test and inspection systems combine individual, modular component assembly with the flexibility of our software solution DTS which can be used for all purposes. The result of this symbiosis is application-specifically designed test systems.

The type of product to be tested and the level of automation determine the framework conditions for the overall concept. This process ensures the electrical and physical safety and function of the products according to norms and requirements.

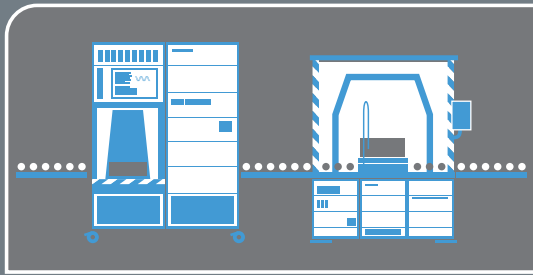
Deutronic test systems can be designed for any possible purpose thanks to their individual, modular setup.

Test systems for testing electric motors, transformers, power supplies, batteries, fuses, switches, plugs, sensors, lights and lamps, wires and cables, white goods, entertainment electronics, train couplings, mechanical relays, semi-conductor relays, magnetic valves, medical devices, etc.

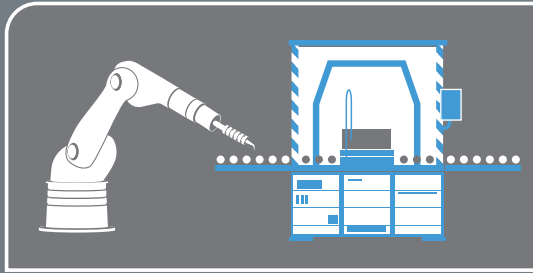
Power



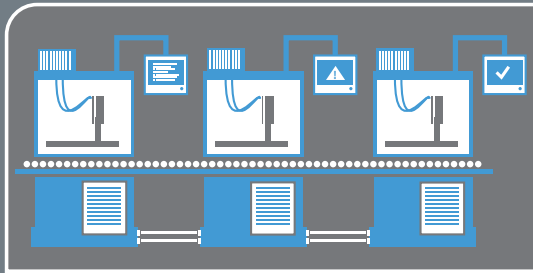
DEUTRONIC 
EDWANZ group



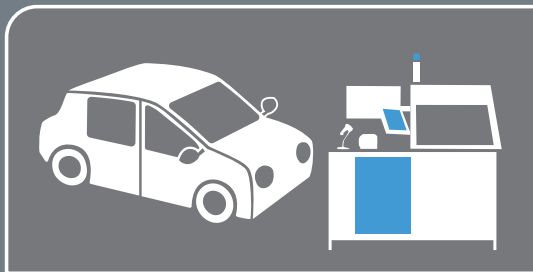
Manual testing



Semi-automatic testing

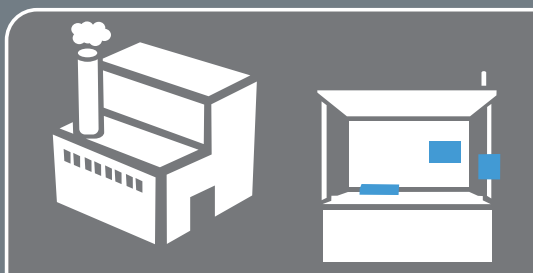


Automatic testing



For automotive

e.g. for electro motors, stators and rotors, batteries



For industry

e.g. for fuses, switches, connectors, sensors, lights, cables and wires, home electronics, entertainment electronics, medical devices, transformers, power supplies



For railway applications

e.g. for rail couplings, mechanical relays, semiconductor relays, magnetic valves



Rotor-/Stator test system

Fully automated test and inspection systems for electromobility



Laboratory testing station

Laboratory testing station for stators



Engine test system

Test system for drum motors



Electric motor test system

EOL for automotive



Trafo test system

Large transformers



Trafo test system

Small transformers

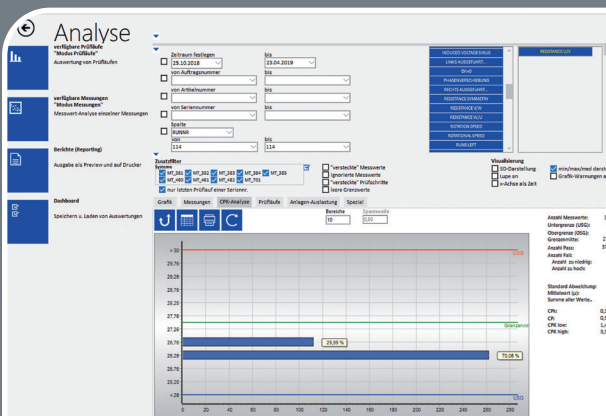
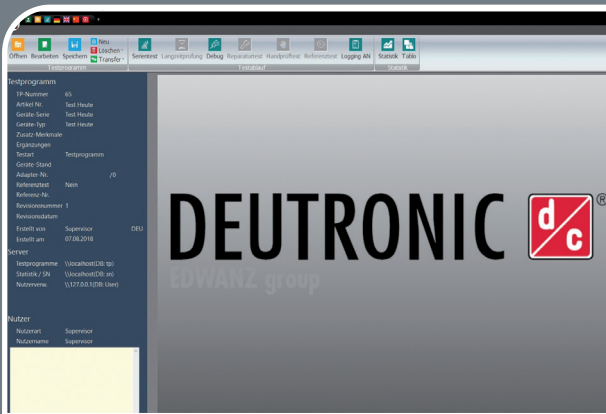


Test software DTS

The Deutronic DTS test software is designed for a maximum range of applications and works under a Windows user interface. It can be easily connected to an existing data transfer network. The documentation and archiving of relevant measurement data is realized in a modern SQL database.

Statistics software DTS-Tablo

The Deutronic DTS-Tablo statistics software enables a survey of the manufacturing quality and visualises potential for improvement. It is designed for the statistical analysis and evaluation of tests and measurements.



Your contact person

Michael Betz

Test & Automation

+49 8707 920-156

m.betz@deutronic.com



Deutronicstraße 5 | D-84166 Adlkofen/Germany | Tel. +49 8707 920-0
E-Mail: sales@deutronic.com | www.deutronic.com

