

Power





✓ Transport system (without charger)

For one battery charger (standard version)

Type: MPC4 & MPC9

Dimensions transport system (HxWxD):
100(202) x 51 x 62 cm

Art.-No.

140526

Transport system options:

Incl. external signal lamp (height 100 cm) **140526/01**

Incl. external signal lamp (height 20 cm) **140526/21**



✓ Transport system for B-Housing version (without charger)

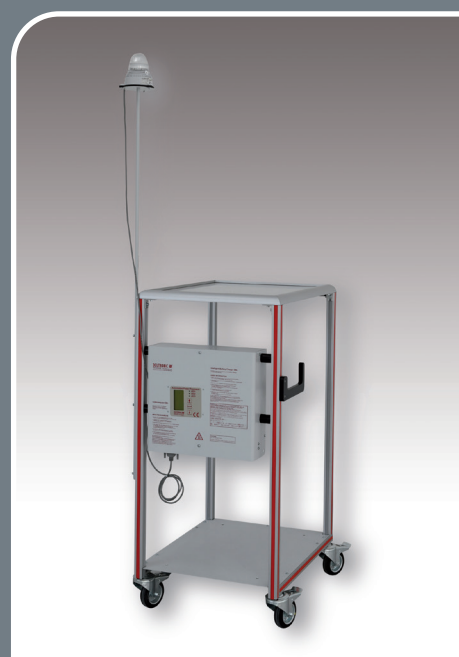
Type: MPC4 & MPC9

For one charger DBL B-Housing

For mounting external signal lamp
107492/x with mounting kit **140591/x**
prepared

Art.-No.

140527



✓ Transport system (multifunctional)

Without accessories

Transport system with mounting device for
two DBL in B housing and signal lamps

Transport system with mounting device for
two DBL2250/3W resp. DBL3000/3W and
signal lamps

Transport system with mounting device
for D-IBM energy buffer system as well as
two DBL/3W or DBL-B and external signal
lamps

Corner protection profile type A
1 set (4x 1m) self-adhesive

Art.-No.

140534

140534/1

140534/2

140534/3

140784



✓ D-IBM Energy buffer system for DBL chargers

On request



✓ Wallmount with cable holder Housing Version A

Wallmount with cable bracket incl.
mounting and fastening materials
for DBL series in A-Housing Version

Type: MPC4 & MPC9

Art.-No.

140551



✓ Wallmount with cable holder Housing Version B

Wallmount with cable bracket incl.
mounting and fastening materials
for DBL series in B-Housing Version

Type: MPC4 & MPC9

Art.-No.

140418



✓ **Basic carrier /
Rework station**

Basic carrier for DBL MPC4 & MPC9
chargers, B-Housing Version

Incl. EU socket combination
Not mounted!

Other socket combination on request

Art.-No.

140422

140422/10



✓ **Cable spring balancer
with locking device**

Load 1.5...3 kg

Including conductor holder
for round cables

Art.-No.

140061/1



✓ **D-ILA
EMC filter for DBL-Series**

Adaptive filter box to meet ILA EMC
requirement on DBL devices

Retrofittable on existing
DBL devices

Type: MPC4 & MPC9

Art.-No.

140291 (MPC4)

140292 (MPC9)



✓ **External Signal Lamp**

External signal lamp for charging computers
of the DBL MPC4 series

For clear signalling of the charging status on production
lines and workshops

MPC4 – with 2.5 m cable length

Without acoustic signalling

Acoustic signalling
with LED signal green

Acoustic signalling
with LED signal yellow

Acoustic signalling
with LED signal red

Mounting set for mounting a signal
lamp on the transport system,
mounting height approx. 100 cm

Art.-No.

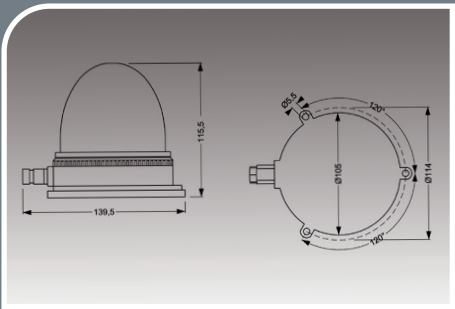
107492

107492/20*

107492/21*

107492/22

140591



MPC4 – with 0.5 m cable length

Without acoustic signalling

Acoustic signalling
with LED signal green

Acoustic signalling
with LED signal yellow

Acoustic signalling
with LED signal red

Mounting set for mounting a signal
lamp on the transport system,
mounting height approx. 20 cm

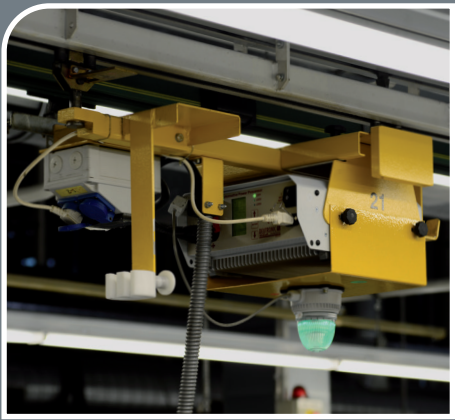
107492/1

107492/10*

107492/11*

107492/12

140591/1



Use of charger with signal lamp during
assembly line

* minimum order
quantity: 5 pieces



✓ External Signal Lamp

External signal lamp for charging computers of the DBL MPC9 series

For clear signalling of the charging status on production lines and workshops

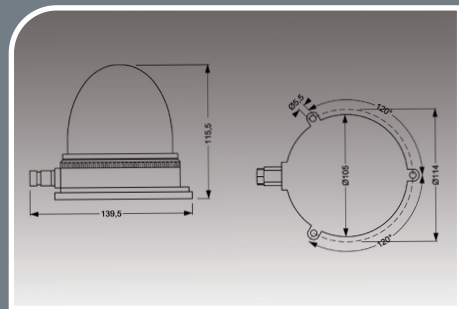
MPC9 – with 2.5 m cable length

DBL-SIG USB Indicator without acoustic signalling

DBL-SIG USB Indicator with acoustic signalling

107489

107489/20



MPC9 – with 0.5 m cable length

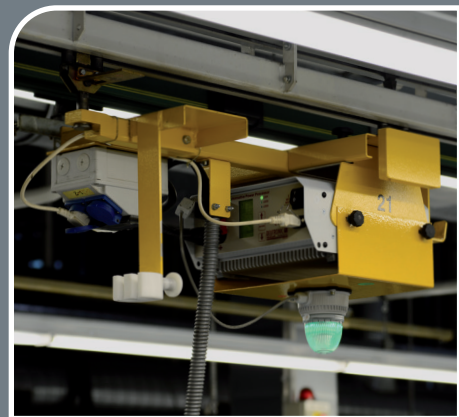
DBL-SIG USB Indicator without acoustic signalling

DBL-SIG USB Indicator with acoustic signalling

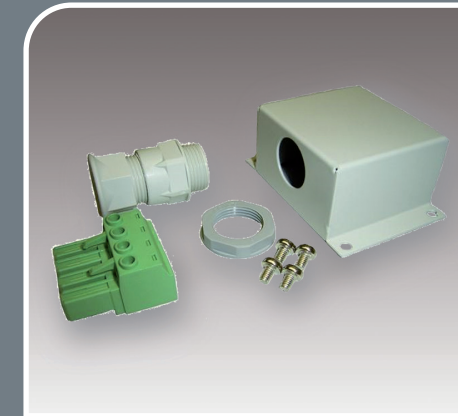
107489/1

107489/10

* minimum order quantity: 5 pieces



Use of charger with signal lamp during assembly line

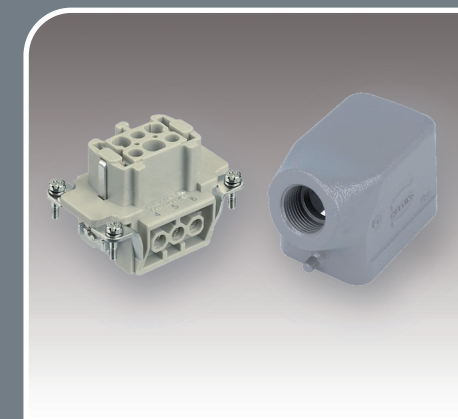


✓ **Mains connection kit**

For DBL3000/3W and DBL5500/3W

Art.-No.

140742



✓ HARTING-plug

HARTING-plug for all
DBL-B-HAN-versions
(mains connection)

Art.-No.

140442



✓ Spare parts

Rubber foot for DBL800
(without illustration)

Hinged feet frontside
Type: MPC4 (f.e. DBL1600)
(without illustration)

Carrying handle for product groups
Type: MPC4 (f.e. DBL1600)

(Attention – handle is not generally mountable – the basic article needs to be prepared ex factory)

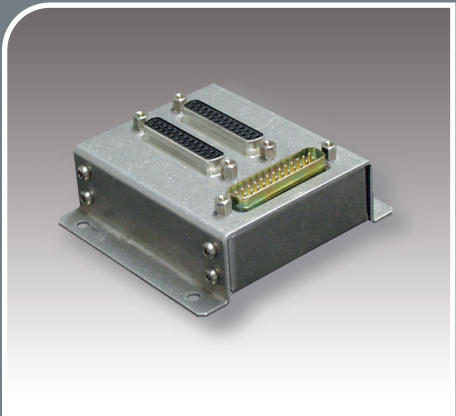
Further spare parts on request

Art.-No.

140726

140731

140728

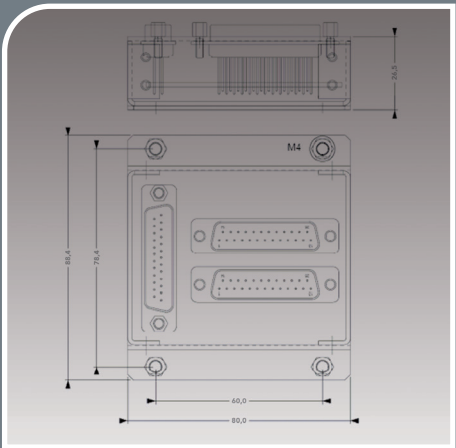


✓ **D-ADAPT-SBB2X25 T-Adapter (MPC4)**

The T-Adapter enables the utilisation of the further functions of the 25 pole DBL interface while at the same time the external signal lamp (DBL-SIG-LR) is connected to the DBL.

Type: MPC4 (f.e. DBL1600)

Art.-No.
140334



✓ **D-ADAPT-SB25 Data Cable**

Data cable male-female, 25 pole / 1.8 m

Art.-No.
140337



✓ **Service-Set for DBL-MPC4 chargers**

RS232/USB converter,
incl. USB extension cable (approx. 80cm)

RS232 data cable, length approx. 3m
(incl. button for optional MPC4 bootloader update)

Art.-Nr.
140236



✓ **Retrofit-USB-Adapter (MPC9)**

Connection of a DBL-SIG-LRv2 remote indicator

Evaluation of the device status
via relay signaling and the
function pin (RemoteOff or
PowerDown)

Art.-Nr.
107280

Selection of the operating mode of the MPC9
device via the system control



✓ **Mains cable for Europe**

With Schuko and IEC plug
According to IEC-60320
C13

Meter	Art.-No.
3.0 m	140502
5.0 m	140501



✓ **Mains cable for USA**

According to NEMA 5-15
C13

Meter	Art.-No.
5.0 m	140504



✓ **Mains cable for Australia**

According to AS3112
C13

Meter	Art.-No.
5.0 m	140416



✓ **Mains cable for United Kingdom**

According to BS1363
C13

Meter	Art.-No.
5.0 m	140413

✓ **Mains cables international (4 set)**

Set consists of 4 mains cables
Europe-Schuko • USA / Canada / Japan
UK / Ireland / Hong Kong • Australia / New Zealand
C13

Meter	Art.-No.
5.0 m	140415



✓ Mains cable for Europe

With Schuko and IEC plug
According to IEC-60320
C19

With Schuko and IEC plug
According to IEC-60320
C19 with self lock

Power cord with Schuko plug, Harting

Meter	Art.-No.
5.0 m	140461
5.0 m	140461/1

Meter	Art.-No.
5.0 m	140465



✓ Mains cable for USA

According to NEMA 5-15
C19

Meter	Art.-No.
5.0 m	140462



✓ Mains cable for Australia

According to AS3112
C19

Meter	Art.-No.
5.0 m	140463



✓ Mains cable for United Kingdom

According to BS1363
C19

Meter	Art.-No.
5.0 m	140464



✓ Charging cable

16 mm² / 100 m reel
Cable for battery charger

Art.-No.
140509

Cable/Lenght	Connection	Charging clamps	Art.-No.
MPC9 1AC A-Housing and MPC4 (except DBL2250 & DBL3000)			
16 mm² / 5.0 m	Welding connectors	200A	140708
16 mm² / 5.0 m	Welding connectors	Angled 1000A	140687
25 mm² / 5.0 m	Welding connectors	200A	140710
25 mm² / 5.0 m	Welding connectors	Angled 1000A	140669
16 mm² / 7.0 m	Welding connectors	200A	140712
16 mm² / 7.0 m	Welding connectors	Angled 1000A	140685
25 mm² / 7.0 m	Welding connectors	200A	140743
16 mm² / 10.0 m	Welding connectors	200A	140721
16 mm² / 10.0 m	Welding connectors	Angled 1000A	140744
25 mm² / 10.0 m	Welding connectors	200A	140710/1
16 mm² / 12.0 m	Welding connectors	200A	140709
16 mm² / 15.0 m	Welding connectors	200A	140708/9
MPC9 B-HAN; MPC4 DBL2250 & DBL3000			
16 mm² / 5.0 m	Cable lug M12	200A	140477
25 mm² / 5.0 m	Cable lug M12	200A	140661
25 mm² / 5.0 m	Cable lug M12	Angled 1000A	140470
35 mm² / 5.0 m	Cable lug M12	200A	140660
25 mm² / 7.0 m	Cable lug M12	200A	140471
25 mm² / 7.0 m	Cable lug M12	Angled 1000A	140472
25 mm² / 10.0 m	Cable lug M12	200A	140473
25 mm² / 10.0 m	Cable lug M12	Angled 1000A	140474
25 mm² / 12.0 m	Cable lug M12	200A	140475
25 mm² / 15.0 m	Cable lug M12	200A	140476
Charging cable for SmartCharger SC300/SC500			
6 mm² / 4.0 m	From the BMCS2 connector up to the charging clamps	Fully isolated clamping tongs	140444
Charging cable for SmartCharger SC750			
8 mm² / 2.0 m	From the MPC50 connector up to the charging clamps	Fully isolated clamping tongs	140454



✓ **Scratch protection for charging cable**
For charging cable 5.0 m
Prevents damage by the charging cable on the vehicle

Art.-No.
140676



✓ **Cable clamps**
completely isolated, for professional applications
Standard 200A red
 Black
 Set red and black

Art.-No.
140557
140558
140559



Set angled 1000A red and black

Art.-No.
140549



Spare part for 200A cable clamps
Handle cover red
Handle cover black

Art.-No.
140553
140554



✓ **Charging cable coupling**
Charging cable coupling (plug)
Charging cable coupling (socket)

Art.-No.
140556
140555



✓ **Welding connector**
Socket / plug for mounting in your own application
Mounting plug (minus)
Mounting socket (plus)

Art.-No.
140563
140562



✓ **Welding plug / Charging cable coupling set**
Set includes Art.-No. 140555, 140556, 140562 and 140563

Art.-No.
140508



✓ **Bayonet adapter for threaded connection**
Compatible with DBLx3-14-B-HAN, DBLx3/3W-14-B-HAN

Art.-No.
140962

Contact



Deutronic Elektronik GmbH
Deutronicstraße 5
D-84166 Adlkofen/Germany
Tel.: +49 8707 920-0
E-Mail: sales@deutronic.com
www.deutronic.com

Imprint

Deutronic Elektronik GmbH
Managing directors: Christian Wanzke, Thomas Wanzke
USt-IdNo.: DE 128 947 951
WEEE-Reg.-No.: DE 13739201
Commercial Register: HRB No. 1837
Court of jurisdiction: Landshut / Germany

All technical data measured with nominal input voltage, full load and 25°C ambient temperature, when not otherwise stated.
Technical changes and errors excepted. The details in the catalogue and in the data sheets describe products, their characteristics are not guaranteed. Loading with "threshold" values (simple combinations) are permissible without permanent damage to the equipment. Operation of the equipment with threshold values for long periods of time can impair the reliability. The threshold value tolerances are subject to usual fluctuations.

