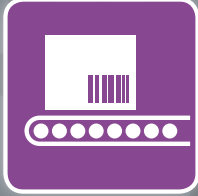
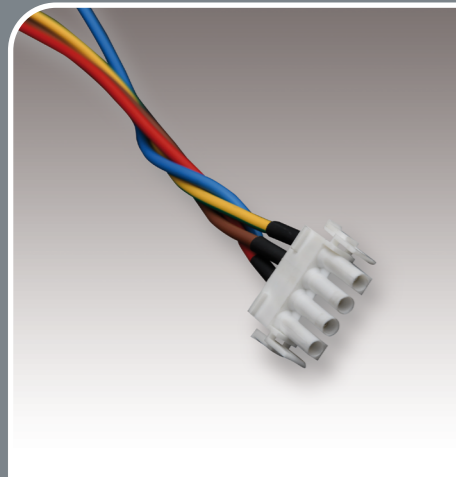


Power





✓ **Mating connector
DR/DVC series**

Art.-No.

140599

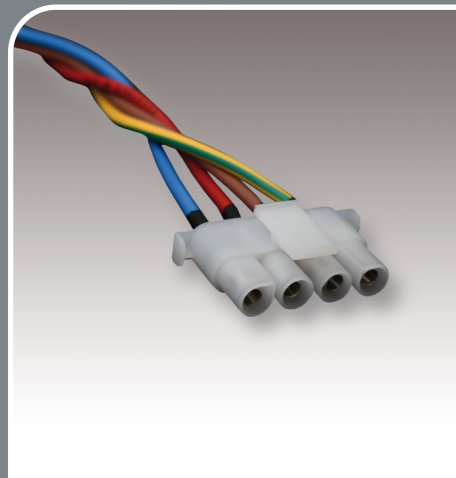
For the device types:

DR25N, DR100N, DR125N, DR150N, DVC75, DVC100,
DVC125, DVC150

Scope of delivery:

4 pole MATE-N-LOK housing

4 crimp contacts (Socket version for cable cross-section
1.5–2.5 mm)



✓ **Mating connector
DR350**

Art.-No.

140597

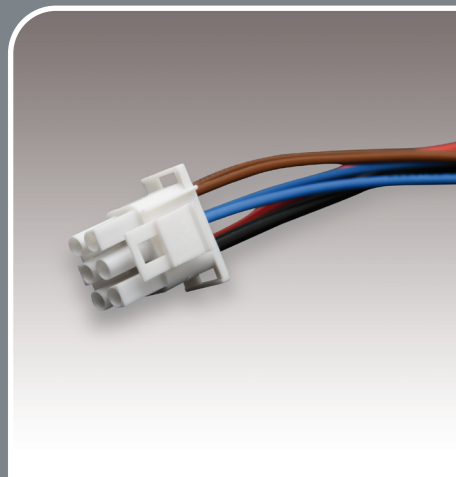
For the device type:

DR350

Scope of delivery:

4 pole MATE-N-LOK housing

4 crimp contacts (Socket version for cable cross-section
3–6 mm)



✓ **Mating connector
DVC250/251**

Art.-No.

140589

For the device types:

DVC250, DVC251, DVC301

Scope of delivery:

6 pole MATE-N-LOK housing

6 crimp contacts (Socket version for cable cross-section
1.5–2.5 mm)



✓ **Mating connector
DVC250/251
pre-assembled**

Art.-No.

140589/1

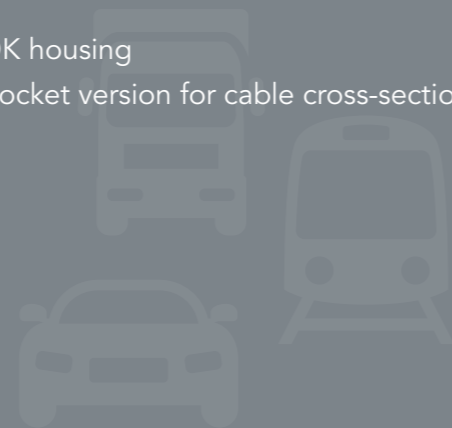
For the device types:

DVC250, DVC251, DVC301

1 m cable length

Scope of delivery:

6 pole MATE-N-LOK mating connector
and 1 m connection cable as single strands,
cable ends open (with ferrules)





✓ **Mating connector
DVC153 / DVC453**

For the device types:
DVC153, DVC453

Scope of delivery:
1 x mating connector
6 x contact pins
6 x gasket

Art.-No.

140593



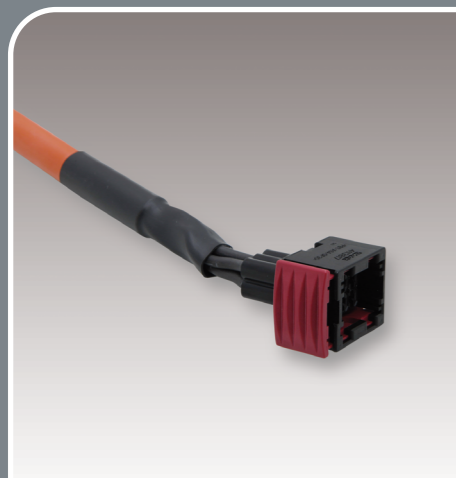
✓ **Communication mating
connector DVCHx3**

For the device types:
DVCHx3

Scope of delivery:
1 x 14 pole car connector TE Ampseal
14 x crimp contacts for connector TE Ampseal

Art.-No.

140322



✓ **Mating connector
DVC453-48/80
pre-assembled**

For the device type:
DVC453-48/80-24

3 m cable length with mating connector TE Connectivity AMP

Version:
With single strands 2.5 mm²

With sheathed cable Ölflex Heat 180
SiHF 7G2.5

Art.-No.

140320

140323



✓ **HV mating connector
DVCHx3 pre-assembled**

For the device types:
DVCHx3

5 m cable length

Scope of delivery:
2 pole HV connector AMPHENOL
Excel Mate Eco HVSL282 06 2 A 104
HV cable (4 mm², shielded single wires)

Art.-No.

140449



✓ **Mating connector
DVC953 / DVC2503
pre-assembled**

For the device types:
DVC953, DVC2503

2 m cable length

Scope of delivery:
Power Lok connection
Twin cable Ölflex 2 x 6 mm²
Open cable ends

Art.-No.

140321



✓ **HV mating connector
DVCHx3**

For the device types:
DVCHx3

Scope of delivery:
2 pole HV connector AMPHENOL
Excel Mate Eco HVSL282 06 2 A 104

Art.-No.

140455



✓ **D-ADAPT-CAN_v2**

Art.-No.
140359/1

- For device types:
DVCx3, DVCHx3 / Adapter kit
- Scope of delivery:
- 1x D-ADAPT-CAN USB / CAN-ADAPTER
 - For updating the Deutronic series DVCx3 and DVCHx3 by means of CAN bus
 - Protocols: CAN 2.0A / CAN J1939
 - 1x ServiceTool OCT
 - PC tool for updating firmware / device parameters documentation
 - 1x Accessory SET
 - USB data cable Type A/C
 - DVCx3 CAN data cable
 - DVC1903 CAN data cable
 - DVC2503 & DVC953 CAN data cable
 - DVCHx3 CAN data cable

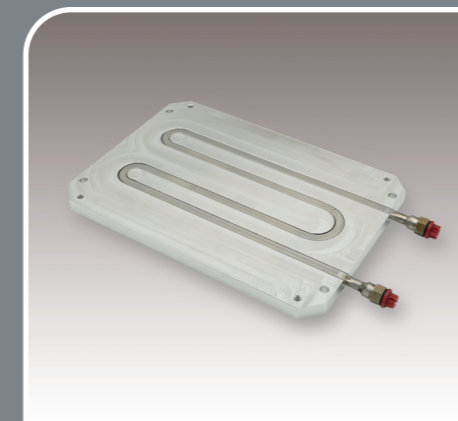


Heat sink lengthwise

✓ **Application specific cooling systems**

- Heat sink incl. mounting plate and fixing material for mounting on DVCHx3 units
- Heat sink lengthwise
- Heat sink crosswise
- For DVCx3 units
- Heat sink crosswise

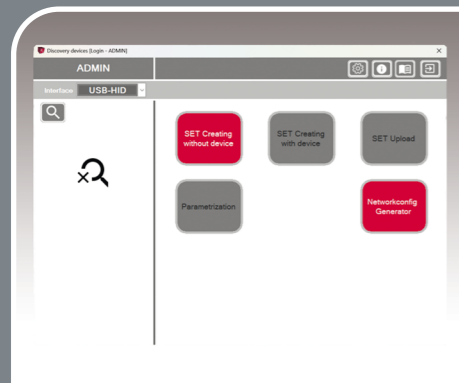
Art.-No.
140240
140241
140243



✓ **ColdPlate for DC/DC converters of the DVCHx3 series**

- Base body made of aluminum and tube bending body made of stainless steel
- 1/4" Connection thread
- Mounting on base plate of the DVCHx3

Art.-No.
140380



✓ **D-Tool-x3 Parameterization tool**

- About PC-based parameterization of the DC/DC-Converter
- Features:
- SET Creating without device
 - SET Creating with device
 - SET Upload
 - Parametrization
 - DBC-File GENERATOR





Deutronic Elektronik GmbH

Deutronicstraße 5

D-84166 Adlkofen/Germany

Phone: +49 8707 920-0

E-Mail: sales@deutronic.com

www.deutronic.com

Imprint

Deutronic Elektronik GmbH

Managing directors: Christian Wanzke, Thomas Wanzke

USt-IdNo.: DE 128 947 951

WEEE-Reg.-No.: DE 13739201

Commercial register: HRB No. 1837

Court of jurisdiction: Landshut / Germany

All technical data at nominal input voltage, full load and 25°C ambient temperature, unless otherwise indicated.

Technical modifications and mistakes reserved. The information in the catalog and in the data sheets are used to describe products, not to assure properties.

Stresses listed under "Maximum Rating" (one at a time) may be applied to devices without resulting in permanent damage to the products.

Operation of the devices with "Maximum Rating" stresses for a longer period of time may affect reliability. Limit value tolerances are subject to normal fluctuation margins.



Accessories catalogue
Transportation / Logistics